

Medicines Optimisation & Patient Safety Learning Event

NIHR Collaboration for Leadership Applied Health
Research and Care (CLAHRC) Northwest London

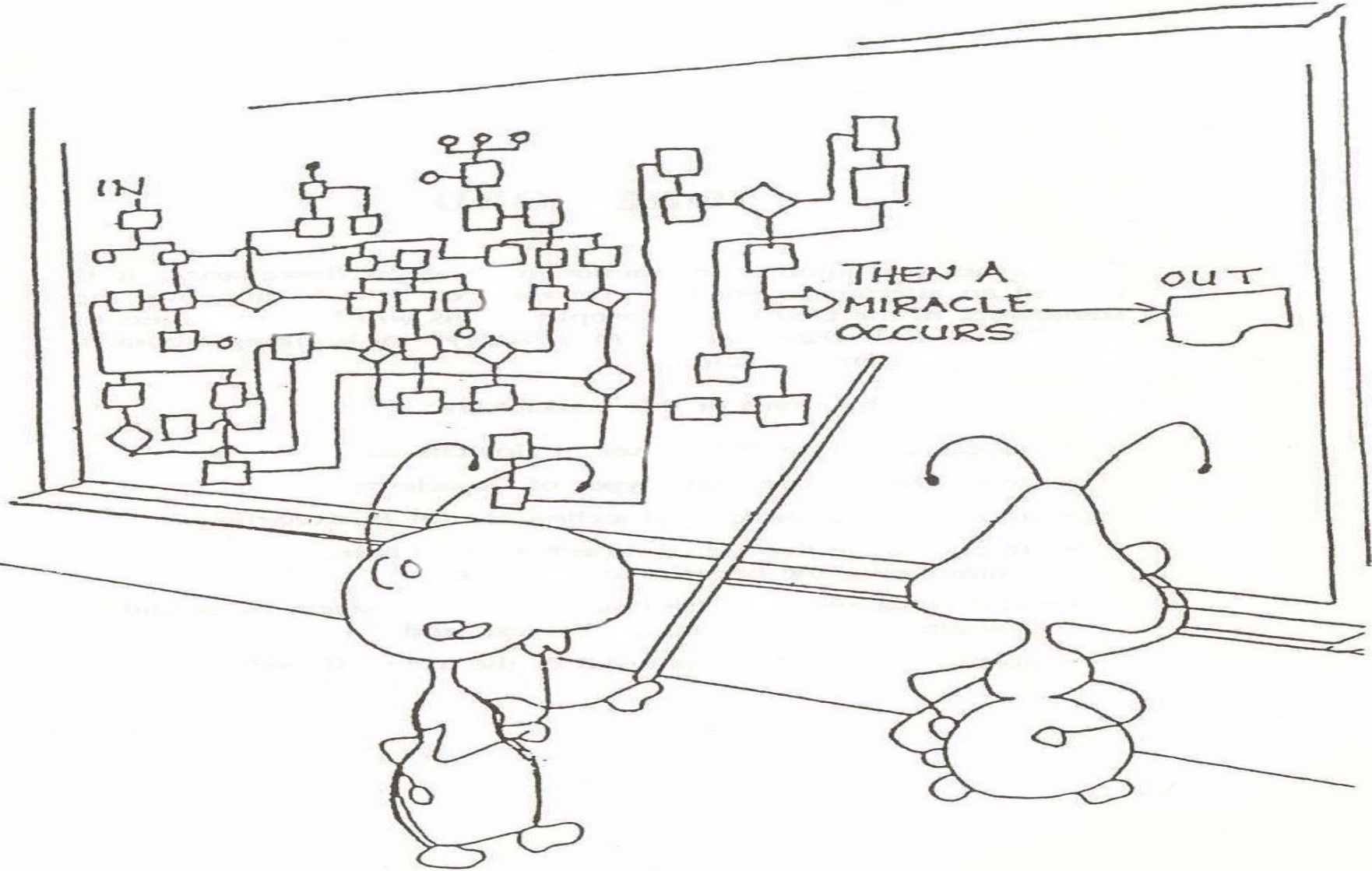
Ganesh Sathyamoorthy

Assistant Director for Partnerships and Business Development,
NIHR CLAHRC Northwest London

 @gjsathyamoorthy: g.sathyamoorthy@imperial.ac.uk

The Aim of CLAHRC

- Accelerating research into better care leading to improved patient experience and outcomes
- Aim to close the second translational gap - Cooksey Report
- Evidence Based-Medicine should be supported by Evidence Based Implementation
- Partnerships between NHS, Academia, Patients, Industry, Local Authorities & Third Sector
- 13 CLAHRCs awarded - all have different approaches



" Good work but I think we need just a little more detail right here "

What is CLAHRC?

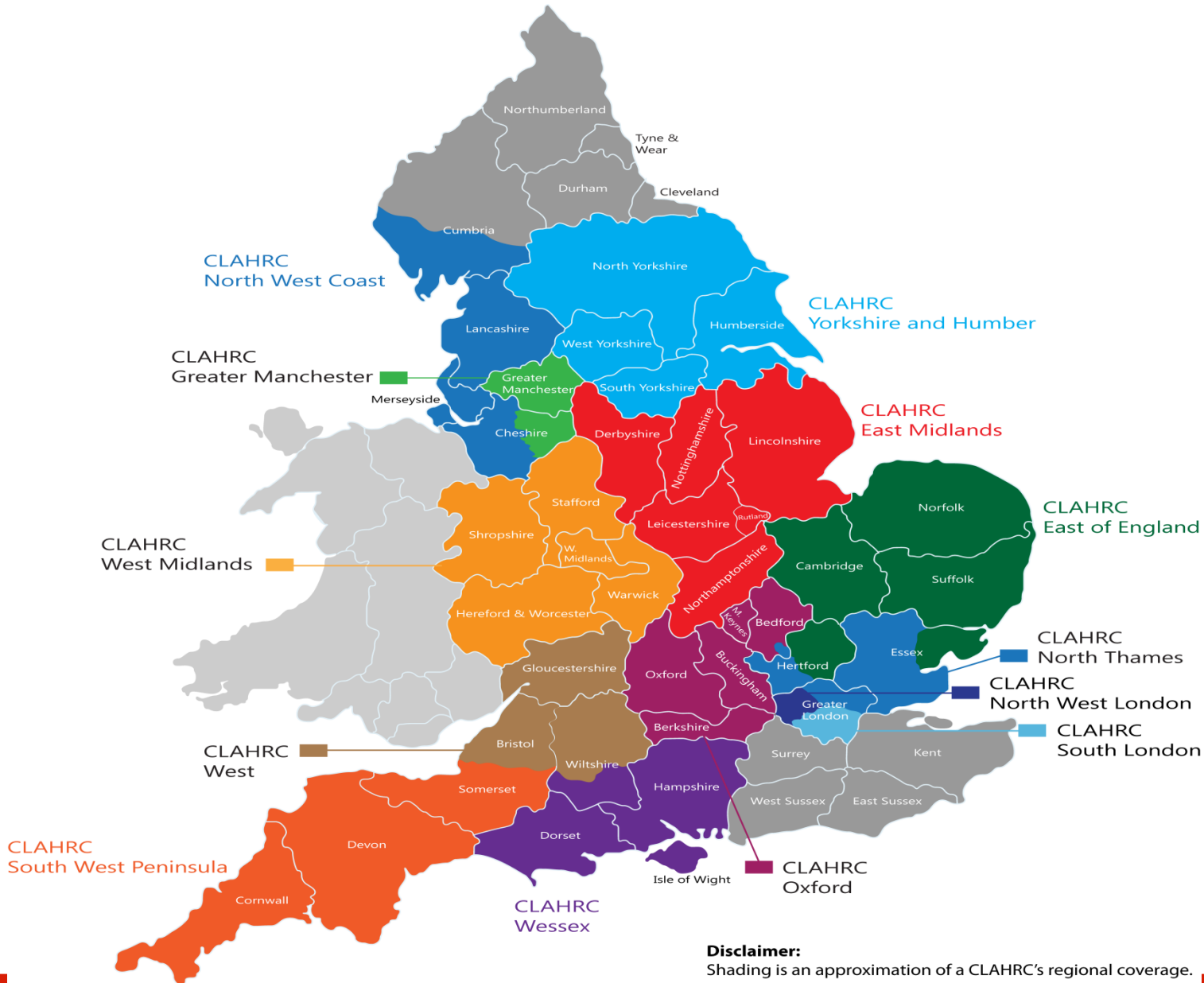
- We are more than a research programme
- A “Community of Practice”
- A “catalyst for change ”
- Evidence is not always enough to create change
- National Network to support rollout/scale up

Priorities – for CLAHRC

- Improve healthcare services
- Produce high quality research outputs
- Build Capacity

Collaborations for Leadership in Applied Health Research and Care (CLAHRCs)

Co
No



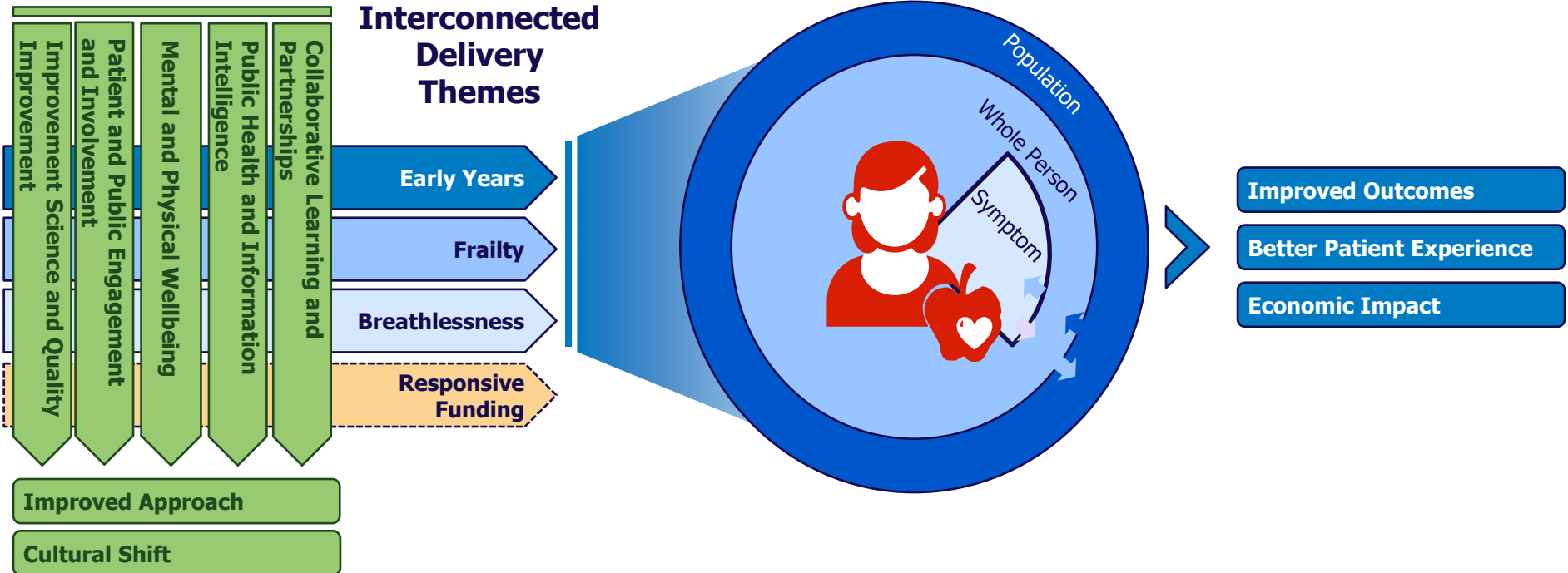
Disclaimer:
Shading is an approximation of a CLAHRC's regional coverage.

Map produced by CLAHRC East Midlands.
Please seek permission before using.

don

Northwest London CLAHRC 2014-2018

Systematic Approach Cross-cutting Themes



“This is the science that will turn your hopes and aspirations, for the excellent services you want to provide for patients into reality rather than dreams”

Dr Julie Reed